

WINE

unica 8/r(4+4divider included)

Smart modularity, high-performance, ease of use, software and integrated connectivity make this model the epitome of latest generation technological innovation. Controlled-temperature wine dispensers designed as modules to be integrated and combined in order to create multiple modular combinations able to satisfy any need.

— Product details





WINE

unica 4/r(2+2 optional divider)

Smart modularity, high-performance, ease of use, software and integrated connectivity make this model the epitome of latest generation technological innovation. Controlled-temperature wine dispensers designed as modules to be integrated and combined in order to create multiple modular combinations able to satisfy any need.

— Product details

Unica 4/r



Unica 8/r



TECHNICAL INFORMATION

- **Models available:**

Unica 4/r Refrigerated (4 bottles in line)

Unica 8/r Refrigerated (8 bottles in line)

- **Bottle compartment temperature:**

4/r 6-18°C

8/r 6-18°C / 12-18°C

- **Refrigeration:**

Alternative compressor

Ultra-silent operation

Low energy consumption

- **Bottles:**

Quick loading with gas spring

Loading with self-centring system

Complete bottle visibility

- **Gas supply**

Food grade nitrogen E941 or Food grade argon E938

- **Supply pressure control:**

Dispenser inlet

Dispensing

- **Wine maintenance:**

Separate for each bottle

- **Doses:**

Up to 3 configurable doses for each bottle

- **System use and activation:**

Behind bar (without wine card)

Self-service (with wine card)

- **Card reader:**

SLE4442 chip

RFID ISO/IEC14443A/B (MIFARE)

- **Display:**

Touchscreen

7" colour LCD

Brightness 800cd

Side viewing angle of 140°

- **Lighting:**

Internal cool white LED (4000K)

External cool white LED (4000K)

- **Data connection:**

LAN

WIFI

- **Door:**

Insulated glazing with magnetic closure

Assisted tilt system

Key lock

- **Materials:**

Stainless steel

Coloured stainless steel

Glass

- **Optional accessories:**

Canister

Regulators for cylinders

Angulars finishing

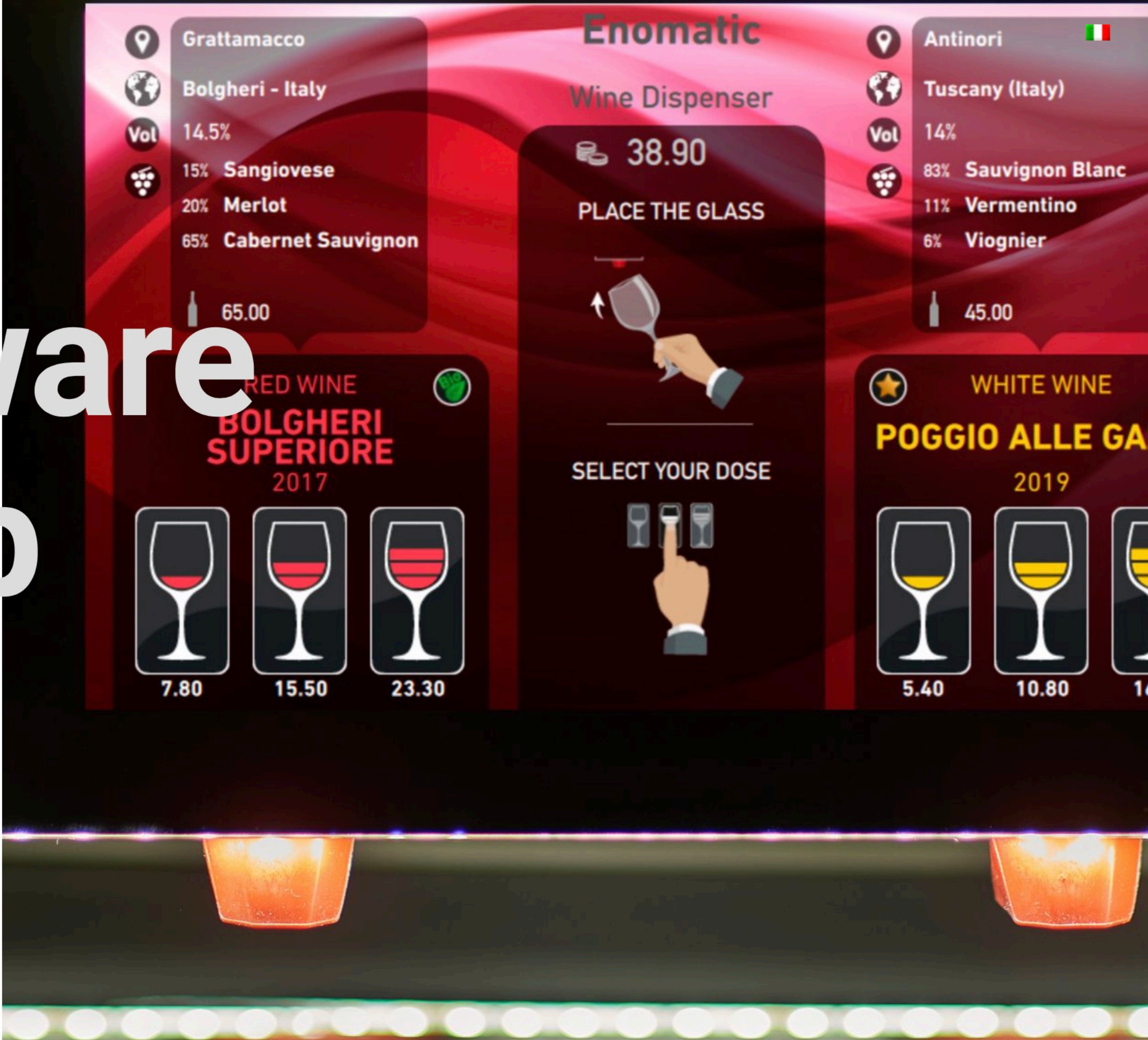
2+2 bottle dividing panel
(for model 4/r only)



Customisations on request.

Models	L	H	P	Weight	Electrical requirements
Unica 4/r	53,1 cm 20,91 in	70,4 cm 27,72 in	31,7 cm 12,48 in	37 kg 81,57 lb	100-240 V 50-60 Hz 120 W (depending on the target market)
Unica 8/r	95,1 cm 37,44 in	70,4 cm 27,72 in	31,7 cm 12,48 in	57,5 kg 126,77 lb	100-240 V 50-60 Hz 125 W (depending on the target market)

Software & App





Enosoft

Three solutions to cover all possible needs.

Enosoft – Card generator

Lets you create a Wine debit card so that customer can taste autonomously.

Enosoft – Professional

Manages operation of the dispensers installed in a store from a computer, providing statistics on consumption as well as allowing the creation of all types of wine card (prepaid, loyalty, credit etc.)

Enosoft – Multistore

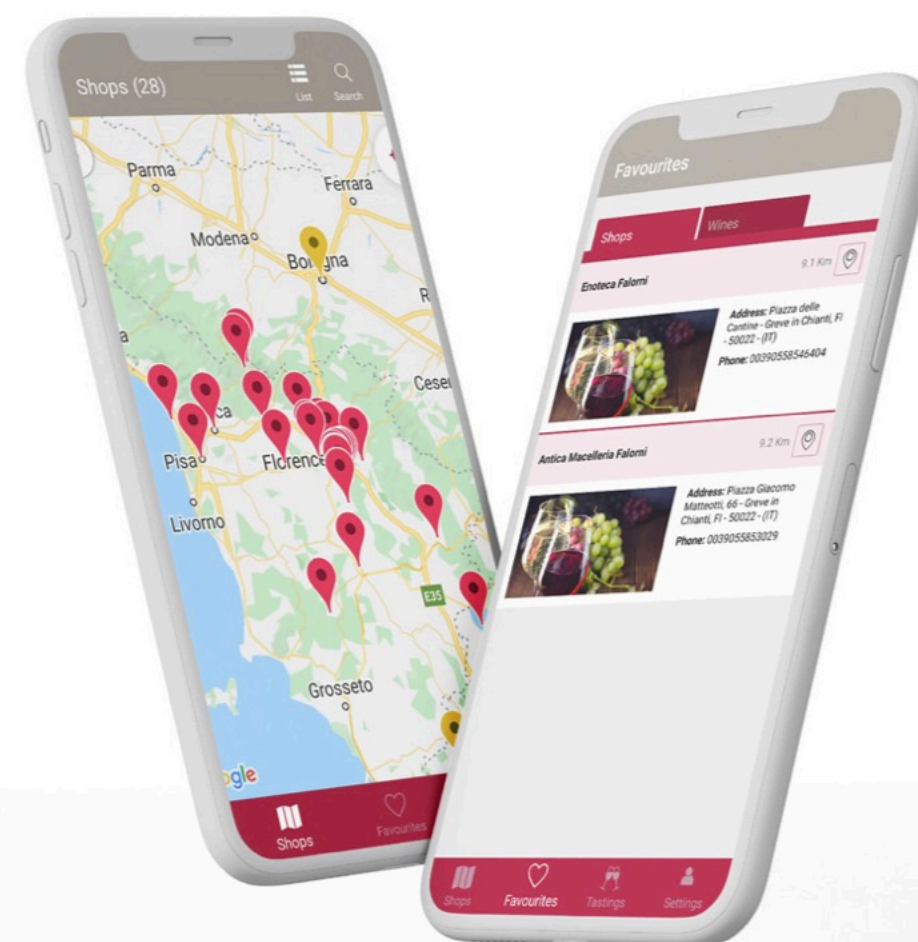
Manages multiple stores with the features of the Professional system, centralising them while still keeping them independent.

Enopolis

Enopolis allows you to find venues all around the world that use **enomatic®** wine dispensers.

Download this app to:

- Find your nearest venue, bookmark it and share the location
- Search for a specific wine and see where to find it
- Discover all the tasting options in a venue
- Bookmark a label
- Score your tastings



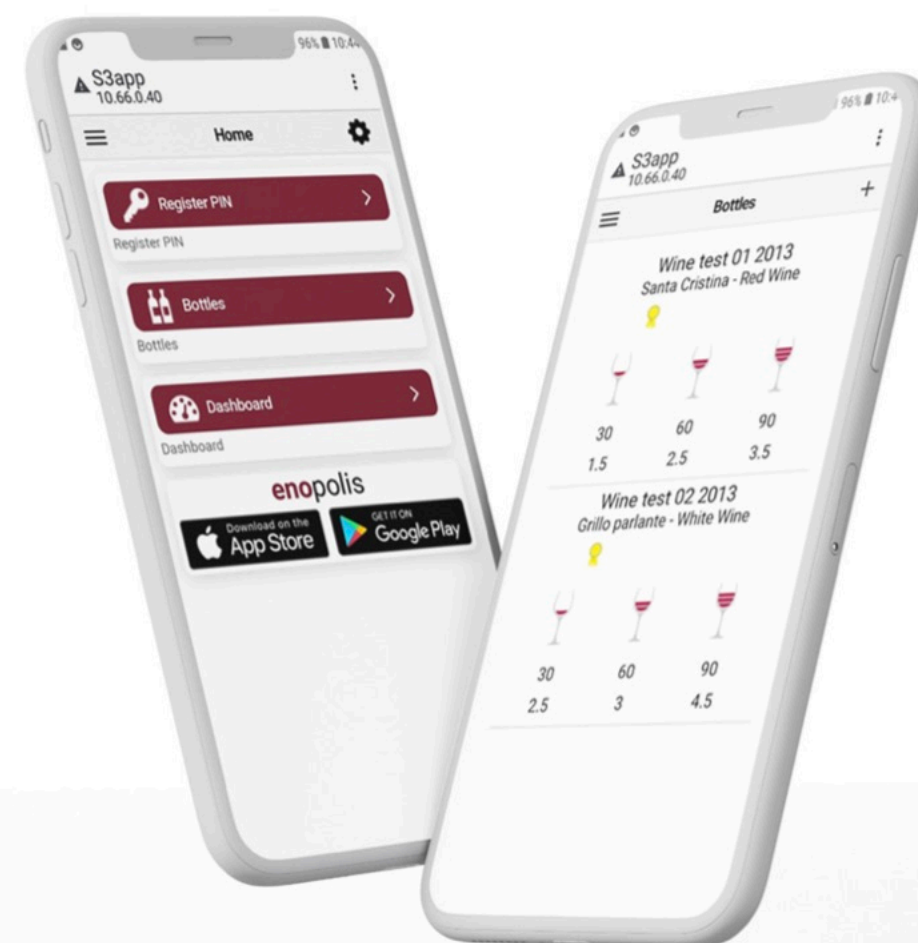


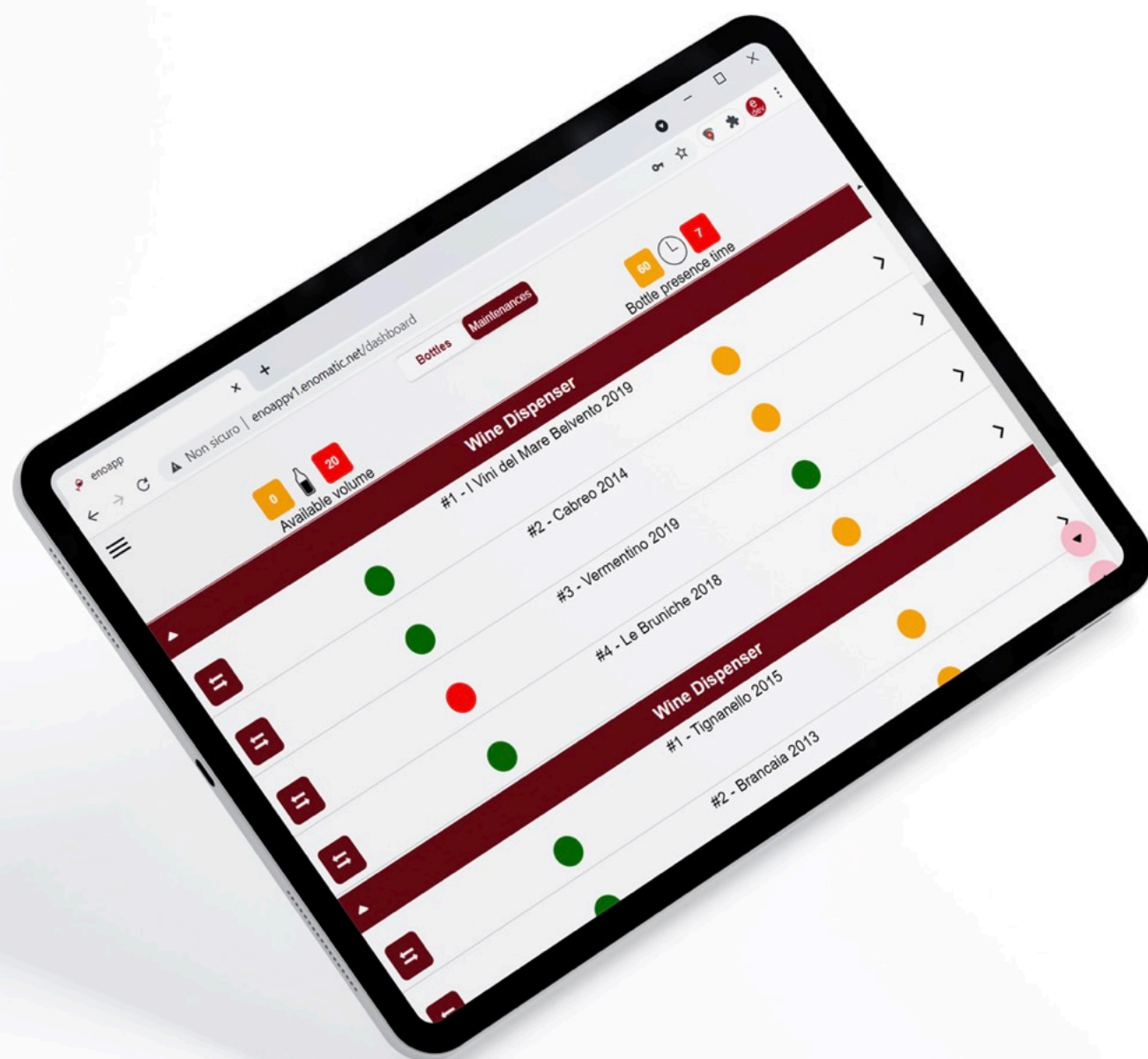
Enotecha

To stay connected anywhere and manage the dispenser in the venue remotely.

S3APP

App to manage the functionality of dispensers (Unica model) from any device connected to the same wired or wi-fi network, using a simple browser.





enoApp

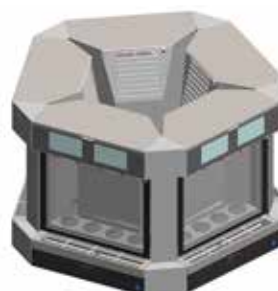
App to manage the functionality of dispensers (Unica model) connected to Enosoft Professional using a simple browser from any device connected to the same wired or wi-fi network.



EXAMPLES OF MODULAR COMPOSITIONS



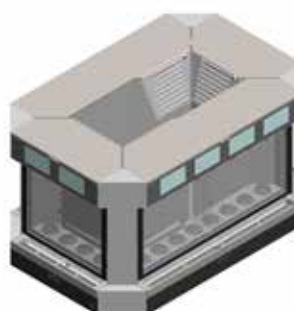
4 Dispensers
+
4 Angular



5 Dispensers
+
5 Angular



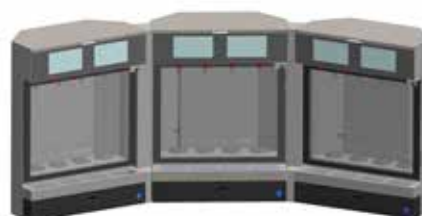
6 Dispensers
+
6 Angular



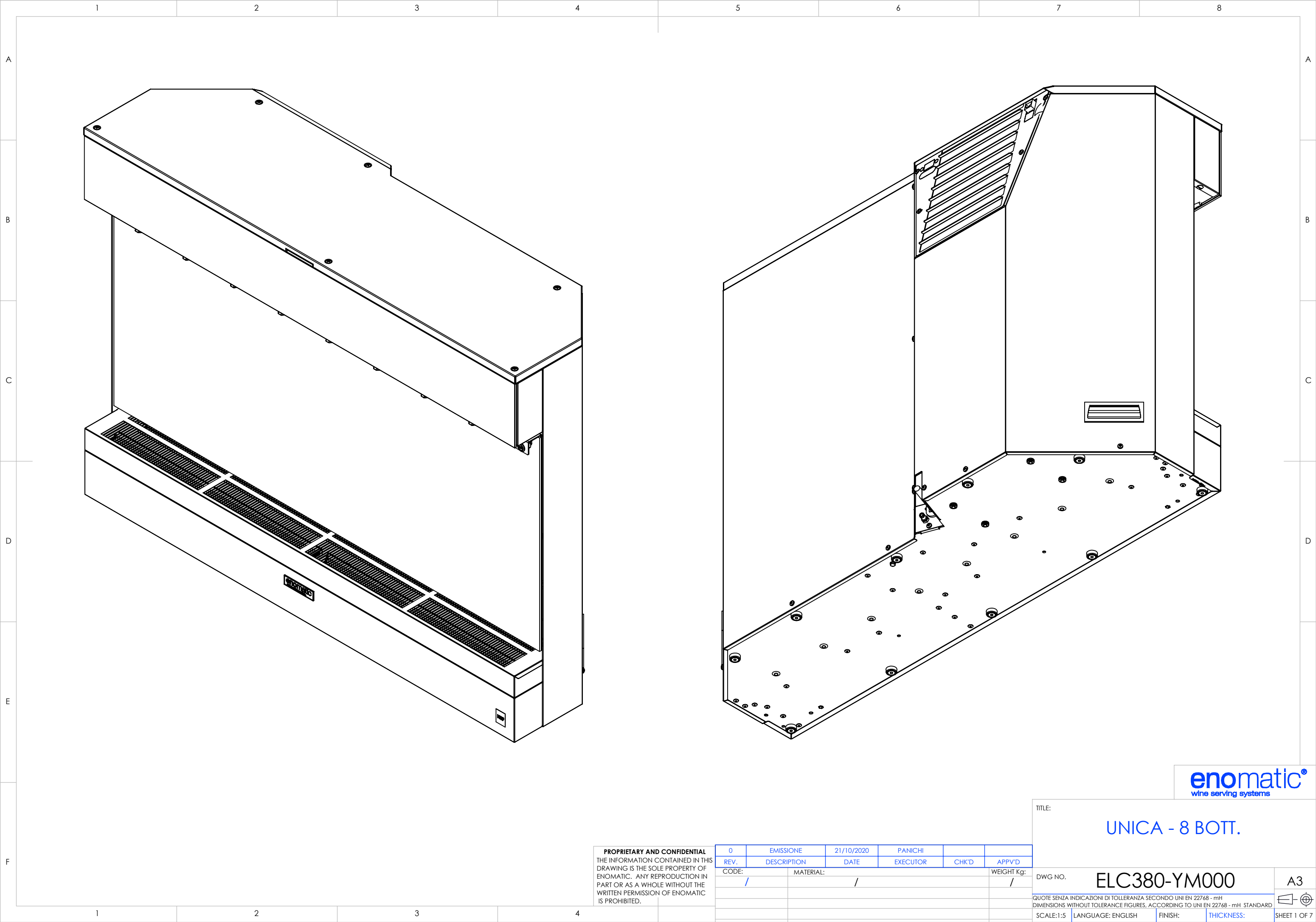
4 Dispensers
+
4 Angular



2 Dispensers
+
2 Angular



3 Dispensers
+
2 Angular



enomatic®
wine serving systems

TITLE:

UNICA - 8 BOTT.

DWG NO. **ELC380-YM000**

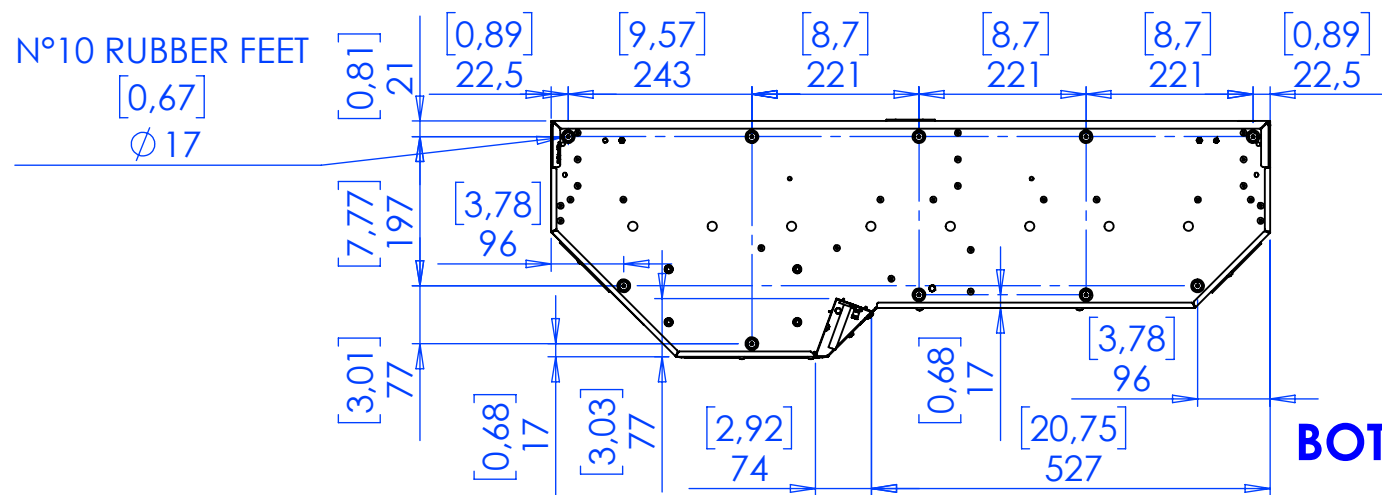
A3

QUOTE SENZA INDICAZIONI DI TOLLERANZA SECONDO UNI EN 22768 - mH
DIMENSIONS WITHOUT TOLERANCE FIGURES, ACCORDING TO UNI EN 22768 - mH. STANDARD

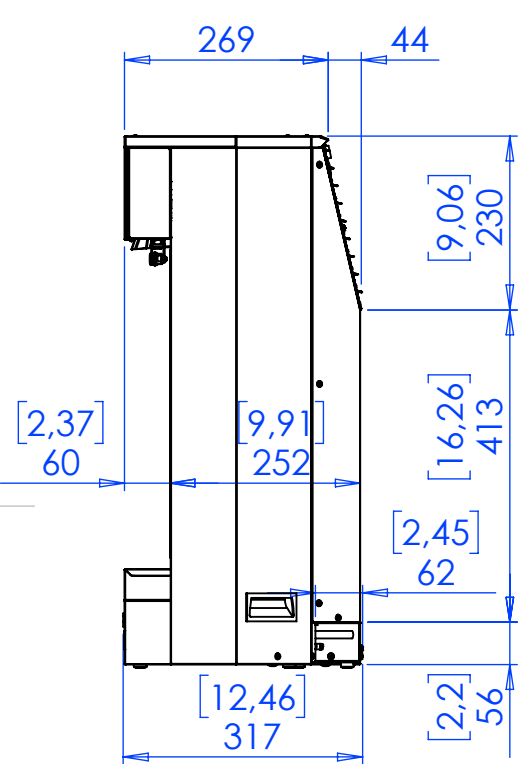
SCALE:1:5 LANGUAGE: ENGLISH FINISH: THICKNESS: SHEET 1 OF 7

PROPRIETARY AND CONFIDENTIAL
THE INFORMATION CONTAINED IN THIS
DRAWING IS THE SOLE PROPERTY OF
ENOMATIC. ANY REPRODUCTION IN
PART OR AS A WHOLE WITHOUT THE
WRITTEN PERMISSION OF ENOMATIC
IS PROHIBITED.

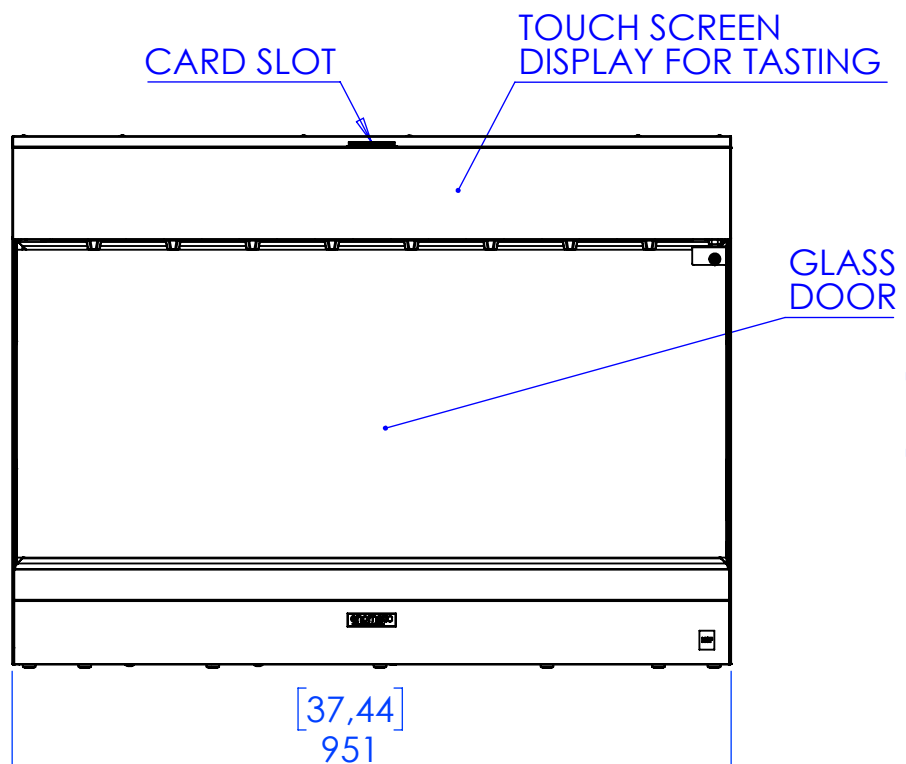
0	EMISSIONE	21/10/2020	PANICHI		
REV.	DESCRIPTION	DATE	EXECUTOR	CHK'D	APPV'D
CODE:	MATERIAL:		WEIGHT Kg:		
/	/		/		



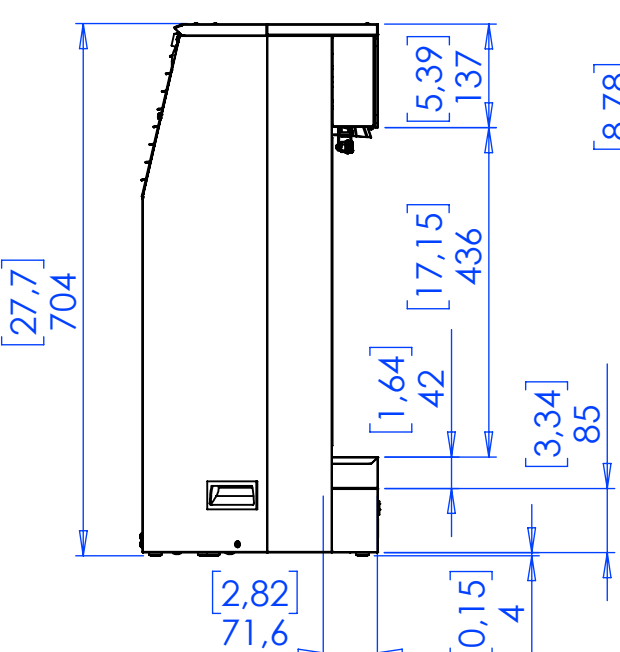
BOTTOM VIEW



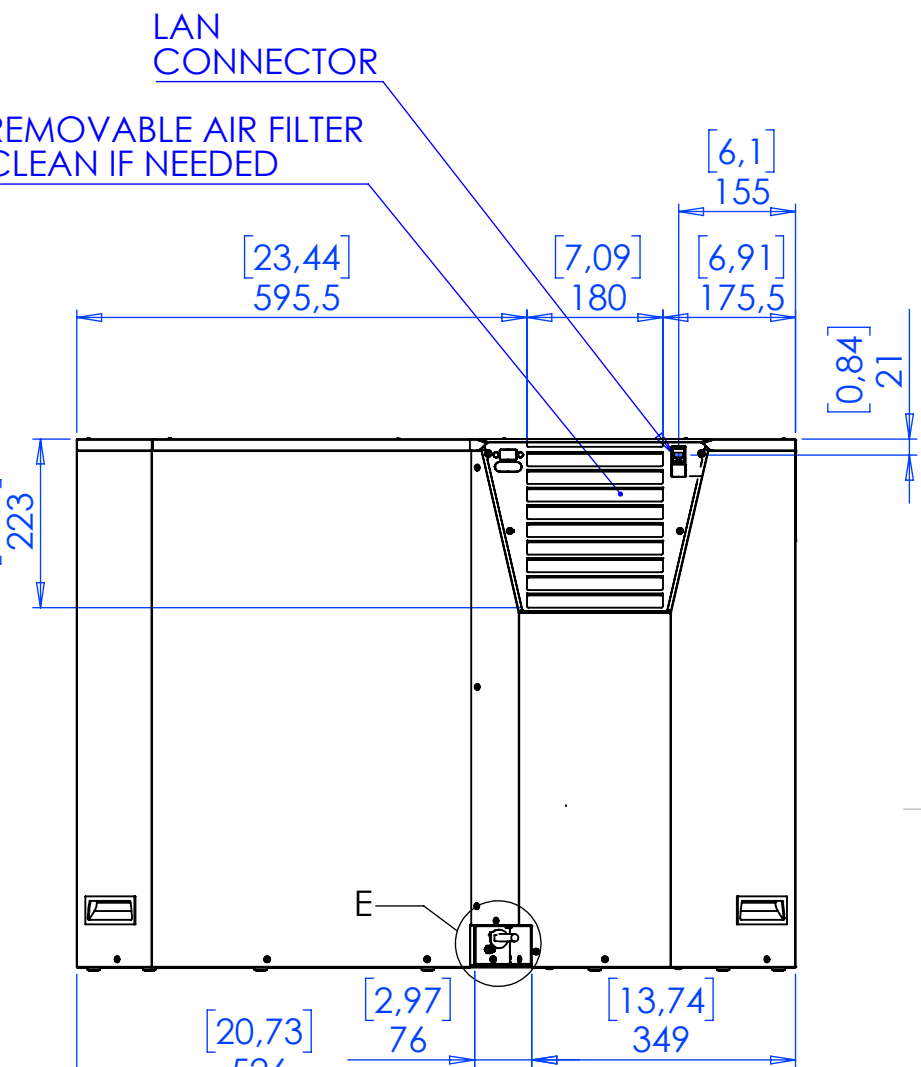
RIGHT SIDE



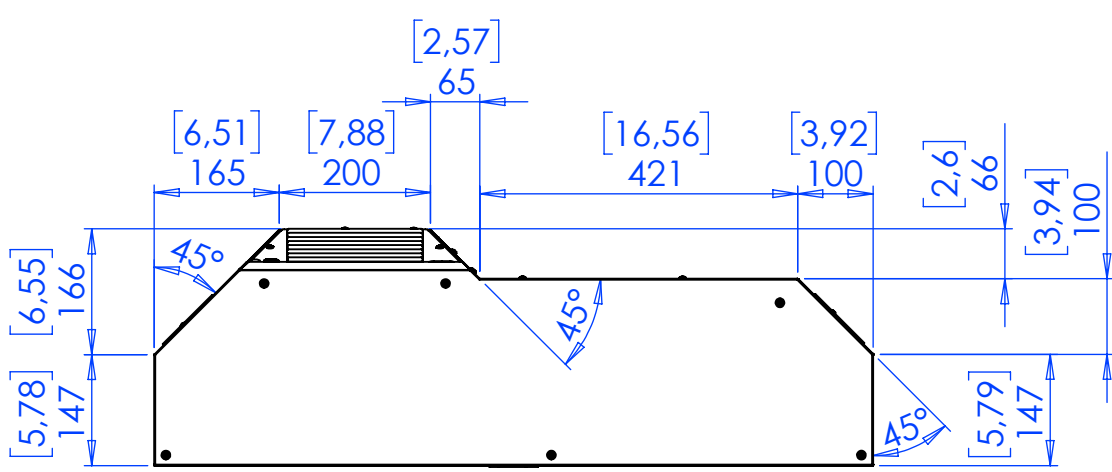
FRONT VIEW



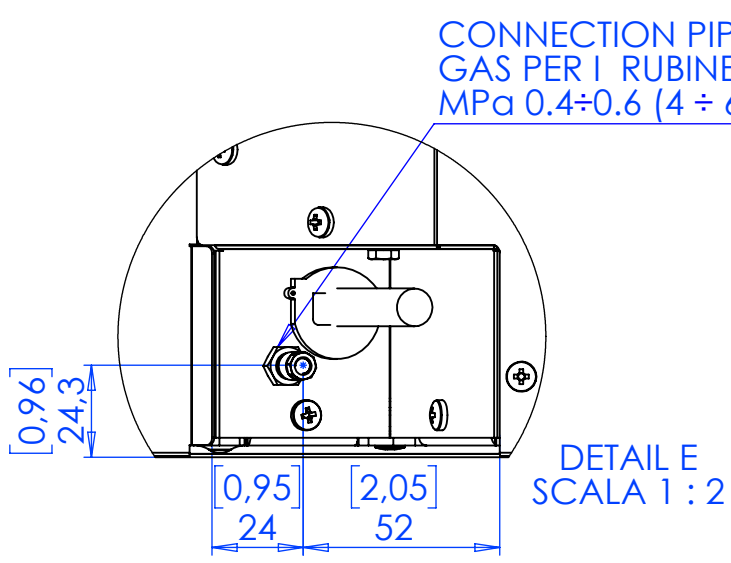
LEFT SIDE



REAR VIEW



TOP VIEW



**DETAIL E
SCALA 1 : 2**

NOTE
- ALL DIMENSIONS ARE IN mm [inches]

PROPRIETARY AND CONFIDENTIAL
THE INFORMATION CONTAINED IN THIS DRAWING IS THE SOLE PROPERTY OF ENOMATIC. ANY REPRODUCTION IN PART OR AS A WHOLE WITHOUT THE WRITTEN PERMISSION OF ENOMATIC IS PROHIBITED.

REV.	DESCRIPTION	DATE	EXECUTOR	CHK'D	APPV'D
CODE:	MATERIAL:				WEIGHT Kg:
/	/	/	/	/	/

TITLE: **UNICA - 8 BOTT.**

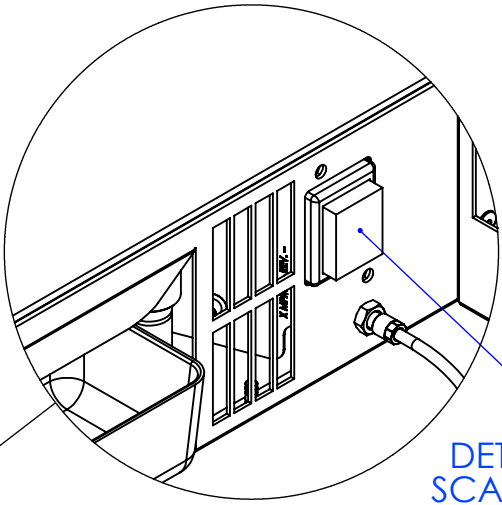
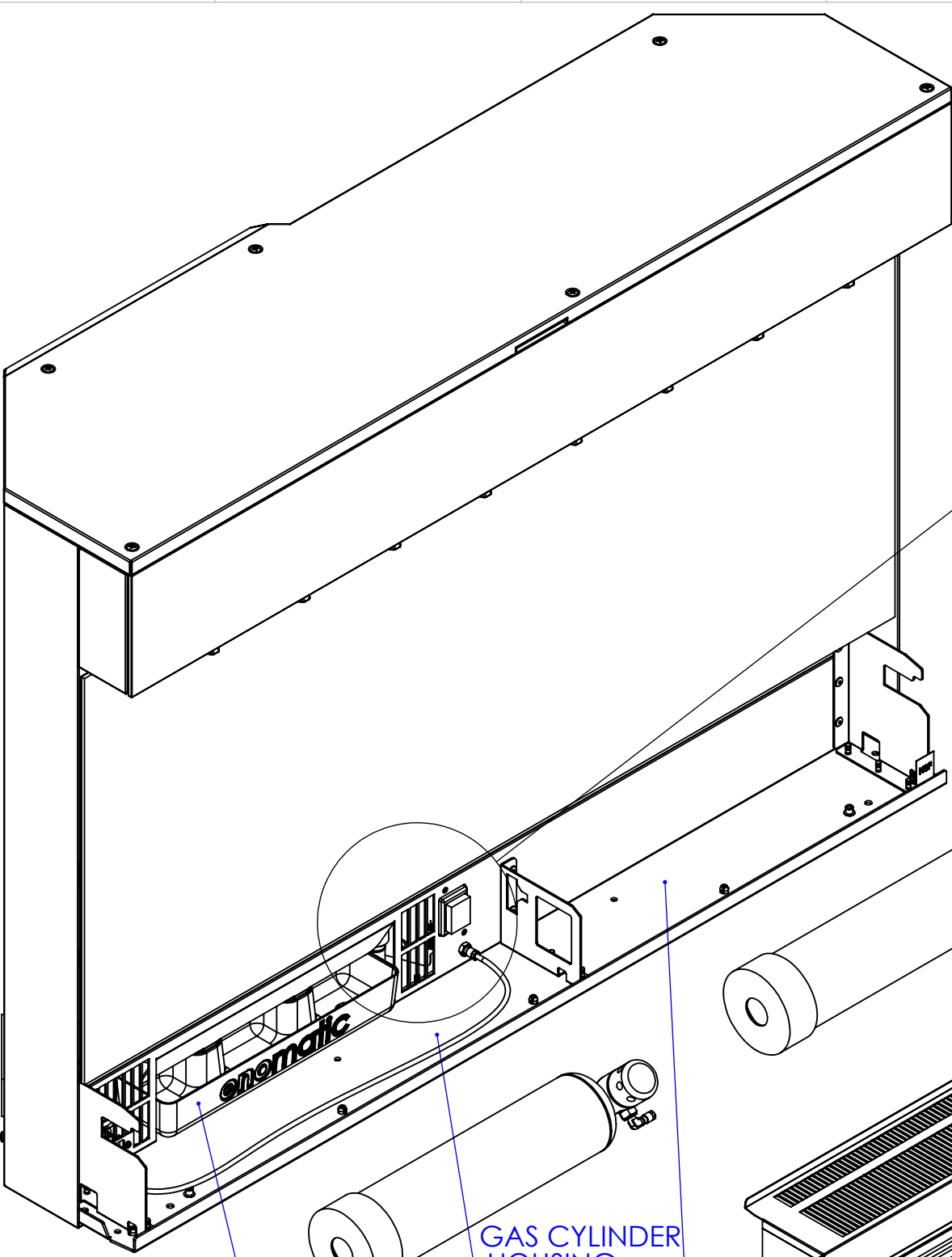
DWG NO. **ELC380-YM000**

SCALE: 1:10 LANGUAGE: ENGLISH FINISH: THICKNESS:

A3

SHEET 2 OF 7

PRIMARY ACCESSORIES NOT INCLUDED



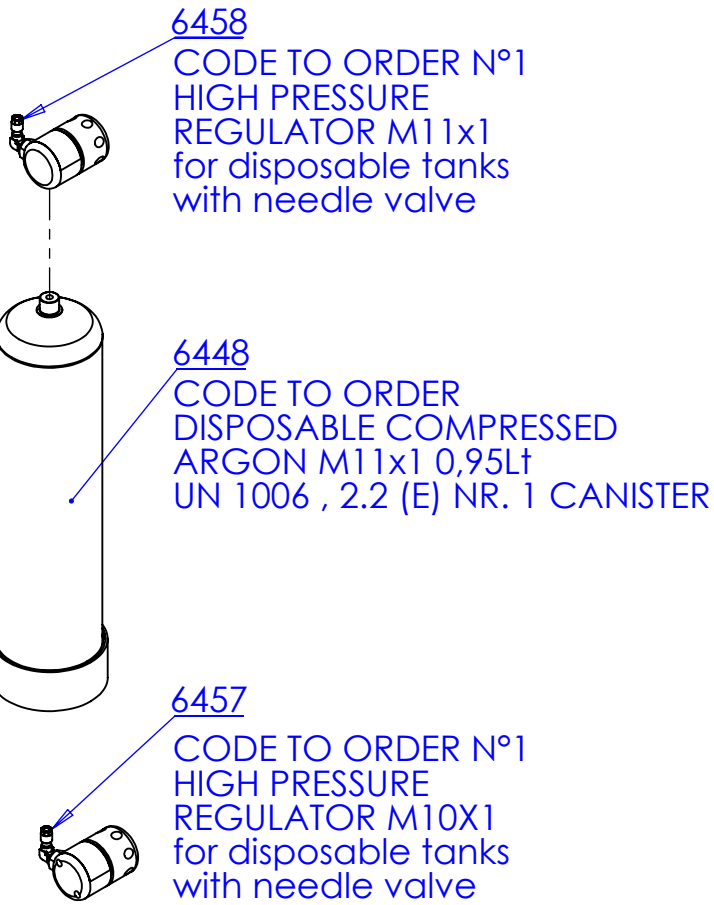
MAIN SWITCH

DETAIL K
SCALA 2 : 5

GAS CYLINDER
HOUSING

REMOVABLE
CONDENSATION TRAY

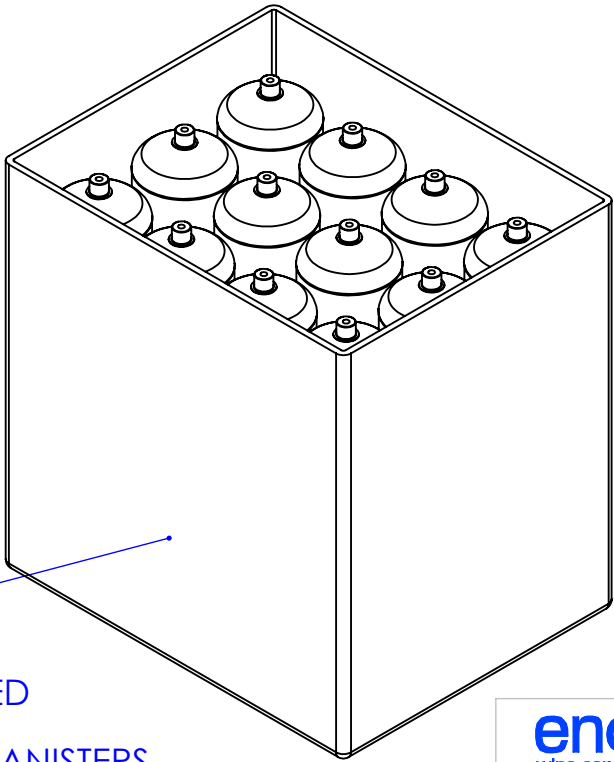
REMOVABLE AIR FILTER
CLEAN IF NEEDED



6458
CODE TO ORDER N°1
HIGH PRESSURE
REGULATOR M11x1
for disposable tanks
with needle valve

6448
CODE TO ORDER
DISPOSABLE COMPRESSED
ARGON M11x1 0,95Lt
UN 1006 , 2.2 (E) NR. 1 CANISTER

6457
CODE TO ORDER N°1
HIGH PRESSURE
REGULATOR M10X1
for disposable tanks
with needle valve



6455
CODE TO ORDER
DISPOSABLE COMPRESSED
ARGON M11x1 0,95Lt
UN 1006 , 2.2 (E) NR.12 CANISTERS

enomatic®
wine serving systems

PROPRIETARY AND CONFIDENTIAL
THE INFORMATION CONTAINED IN THIS
DRAWING IS THE SOLE PROPERTY OF
ENOMATIC. ANY REPRODUCTION IN
PART OR AS A WHOLE WITHOUT THE
WRITTEN PERMISSION OF ENOMATIC
IS PROHIBITED.

REV.	DESCRIPTION	DATE	EXECUTOR	CHK'D	APPV'D
CODE:	MATERIAL:				WEIGHT Kg:
/	/				/

TITLE:		UNICA - 8 BOTT.	
DWG NO.	ELC380-YM000	A3	
QUOTE SENZA INDICAZIONI DI TOLLERANZA SECONDO UNI EN 22768 - mH DIMENSIONS WITHOUT TOLERANCE FIGURES, ACCORDING TO UNI EN 22768 - mH. STANDARD			
SCALE:1:5	LANGUAGE: ENGLISH	FINISH:	THICKNESS:
		SHEET 3 OF 7	

	1	2	3	4			
A	UNICA - 4 BOTTLE						
	SIZE	HEIGHT (MIN -MAX)	704 mm [27.72]				
		DEPTH	317 mm [12.48]				
		WIDTH	951 mm [37.44]				
	WEIGHT (Kg)	57.5 Kg					
	FINISH MATERIALS	STAINLESS STEEL AISI 304 - GLASS					
B	ELETRICAL FEATURES	AVAILABLE MODEL					
		VOLTAGE (V)	100	115	110-127	200-220	220-240
		FREQUENCY (Hz)	50-60	60	60	50-60	50
		POWER (W)	85	125	85	105	128
		AMPS (A)	0.95	1.5	0.95	0.55	0.75
C	REFRIGERATION SPECIFICATION	REFRIGERATION GAS	R-134A				
		TEMPERATURE CONTROL	ELECTRONIC CONTROLLER				
		DEFROST METHOD	AUTOMATIC VIA ELECTRONIC CONTROLLER				
		METHOD FOR TEMPERATURES CONTROL	DIGITAL				
	PRESSURE GAS INLET FOR TAPS (ARGON OR NITROGEN)		MPa 0.4÷0.6 (4÷6 Bar)				
D	ACCEPTED BOTTLES	HEIGHT	220÷365mm [8.66÷14.37]				
		Ø MAX	TAP 1	105 mm [4.13]			
			TAP 2	101 mm [3.98]			
			TAP 3	93 mm [3.66]			
			TAP 4	90 mm [3.54]			
			TAP 5	97 mm [3.82]			
			TAP 6	105 mm [4.13]			
			TAP 7	105 mm [4.13]			
			TAP 8	105 mm [4.13]			
E							

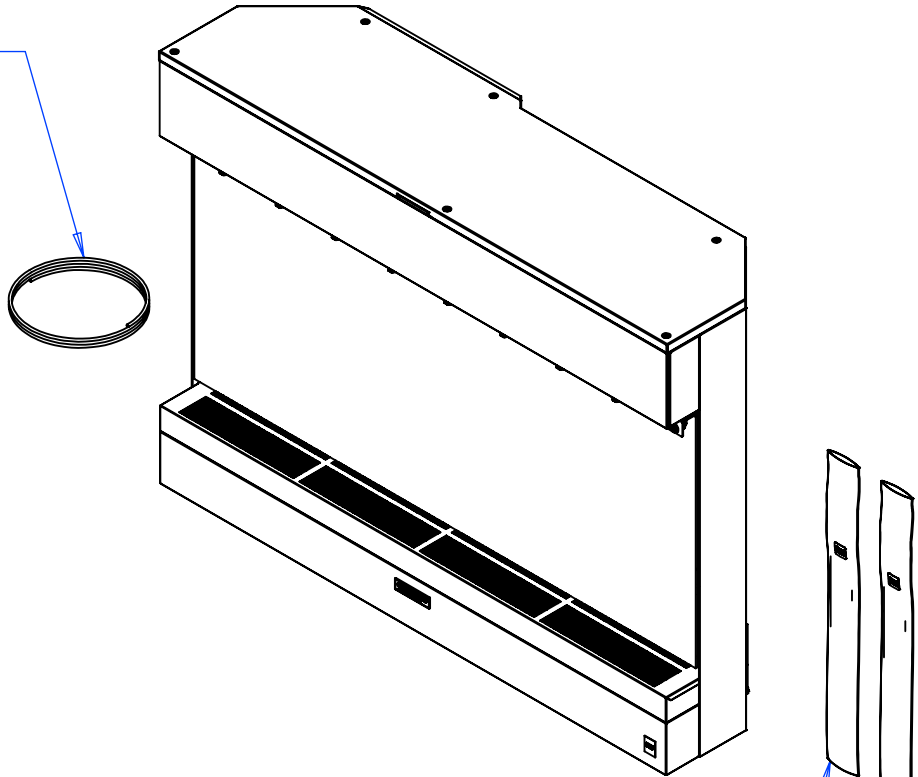
NOTE

- ALL DIMENSIONS ARE IN mm [inches]

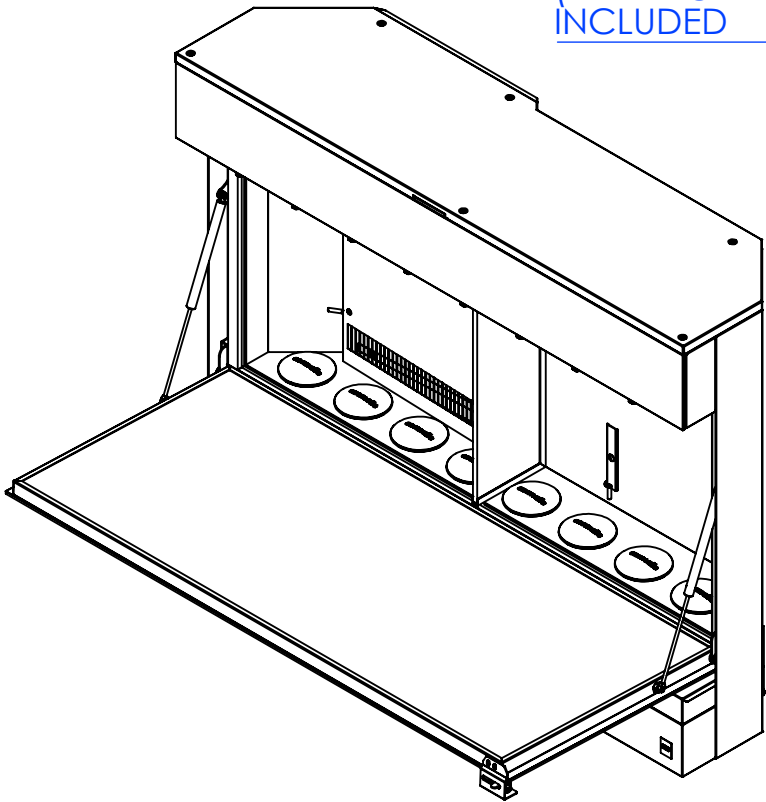
PROPRIETARY AND CONFIDENTIAL
THE INFORMATION CONTAINED IN THIS
DRAWING IS THE SOLE PROPERTY OF
ENOMATIC. ANY REPRODUCTION IN
PART OR AS A WHOLE WITHOUT THE
WRITTEN PERMISSION OF ENOMATIC
IS PROHIBITED.

REV.	DESCRIPTION	DATE	EXECUTOR	CHK'D	APPV'D
CODE:	MATERIAL:				WEIGHT Kg:
/	/				/

3 METERS OF PIPE
Ø 4mm O.D.
(Ø 2.5 I.D.)
INCLUDED



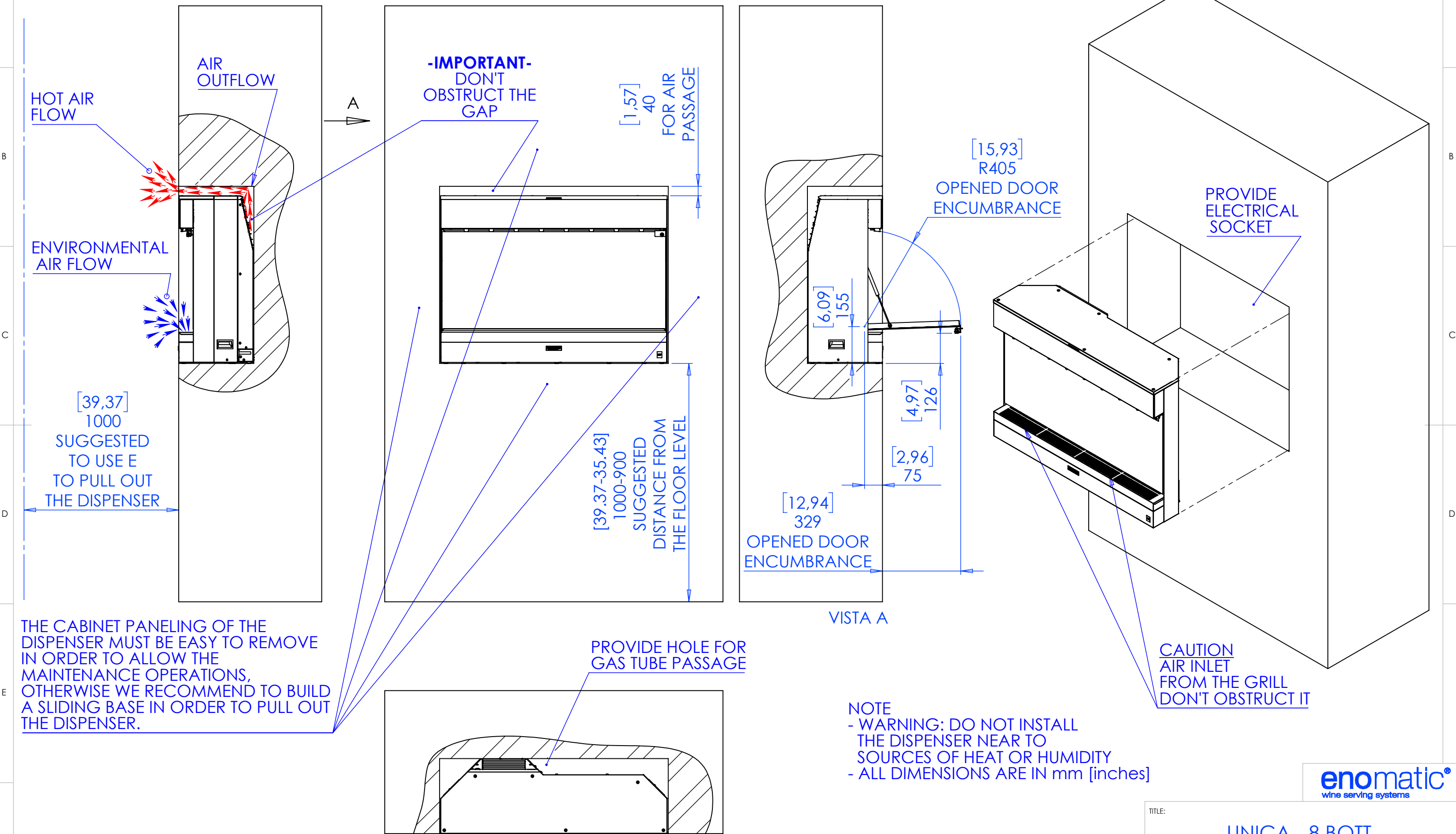
BOTTLES PIPES WITH FILTER
(N°2 PACKAGES OF 5 PIECES)
INCLUDED



enomatic®
wine serving systems

TITLE:		UNICA - 8 BOTT.	
DWG NO.		ELC380-YM000	
QUOTE SENZA INDICAZIONI DI TOLLERANZA SECONDO UNI EN 22768 - mH DIMENSIONS WITHOUT TOLERANCE FIGURES, ACCORDING TO UNI EN 22768 - mH. STANDARD		A3	
SCALE:1:10	LANGUAGE: ENGLISH	FINISH:	THICKNESS:
			SHEET 4 OF 7

1 - EXAMPLE OF INSTALLATION - POSITIONING IN FORESEEN BOX
(REFER TO MINIMAL REQUIRED CLEARANCE FOR PROPER PERFORMANCES)



THE CABINET PANELING OF THE DISPENSER MUST BE EASY TO REMOVE IN ORDER TO ALLOW THE MAINTENANCE OPERATIONS, OTHERWISE WE RECOMMEND TO BUILD A SLIDING BASE IN ORDER TO PULL OUT THE DISPENSER.

NOTE
- WARNING: DO NOT INSTALL THE DISPENSER NEAR TO SOURCES OF HEAT OR HUMIDITY
- ALL DIMENSIONS ARE IN mm [inches]



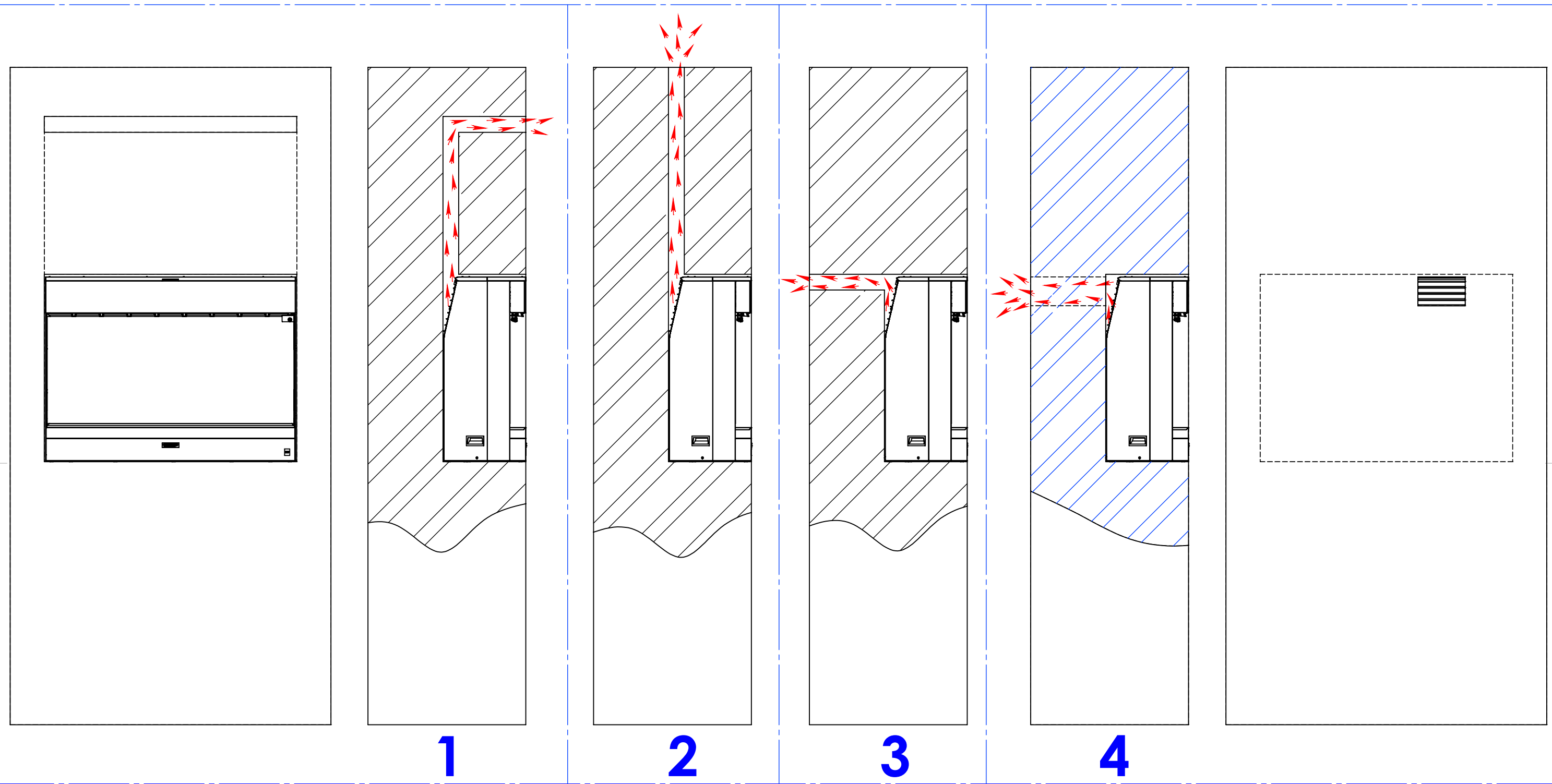
UNICA - 8 BOTT.

PROPRIETARY AND CONFIDENTIAL
THE INFORMATION CONTAINED IN THIS DRAWING IS THE SOLE PROPERTY OF ENOMATIC. ANY REPRODUCTION IN PART OR AS A WHOLE WITHOUT THE WRITTEN PERMISSION OF ENOMATIC IS PROHIBITED.

REV.	DESCRIPTION	DATE	EXECUTOR	CHK'D	APPV'D
CODE:	MATERIAL:				WEIGHT Kg:
/	/				/

TITLE:	UNICA - 8 BOTT.			A3
DWG NO.	ELC380-YM000			
QUOTE SENZA INDICAZIONI DI TOLLERANZA SECONDO UNI EN 22768 - mH DIMENSIONS WITHOUT TOLERANCE FIGURES, ACCORDING TO UNI EN 22768 - mH. STANDARD				
SCALE:1:15	LANGUAGE: ENGLISH	FINISH:	THICKNESS:	SHEET 5 OF 7

3 -N°4 EXAMPLE OF INSTALLATION - BUILT-IN POSITIONING -
PASSAGE OF AIR FOR EACH DISPENSER BIGGER OF 10000 mm² [15,5 in²]



enomatic®
wine serving systems

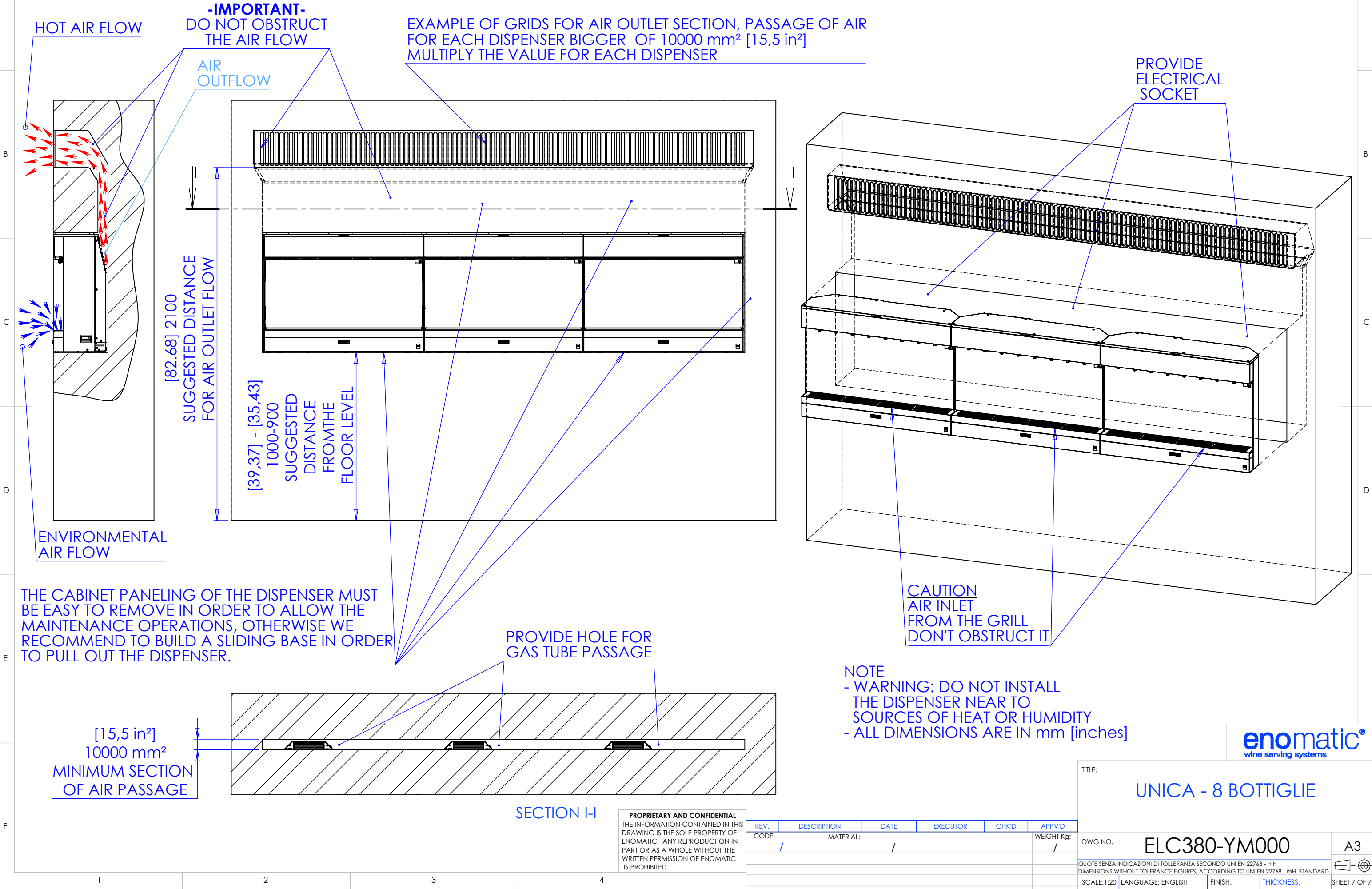
UNICA - 8 BOTT.

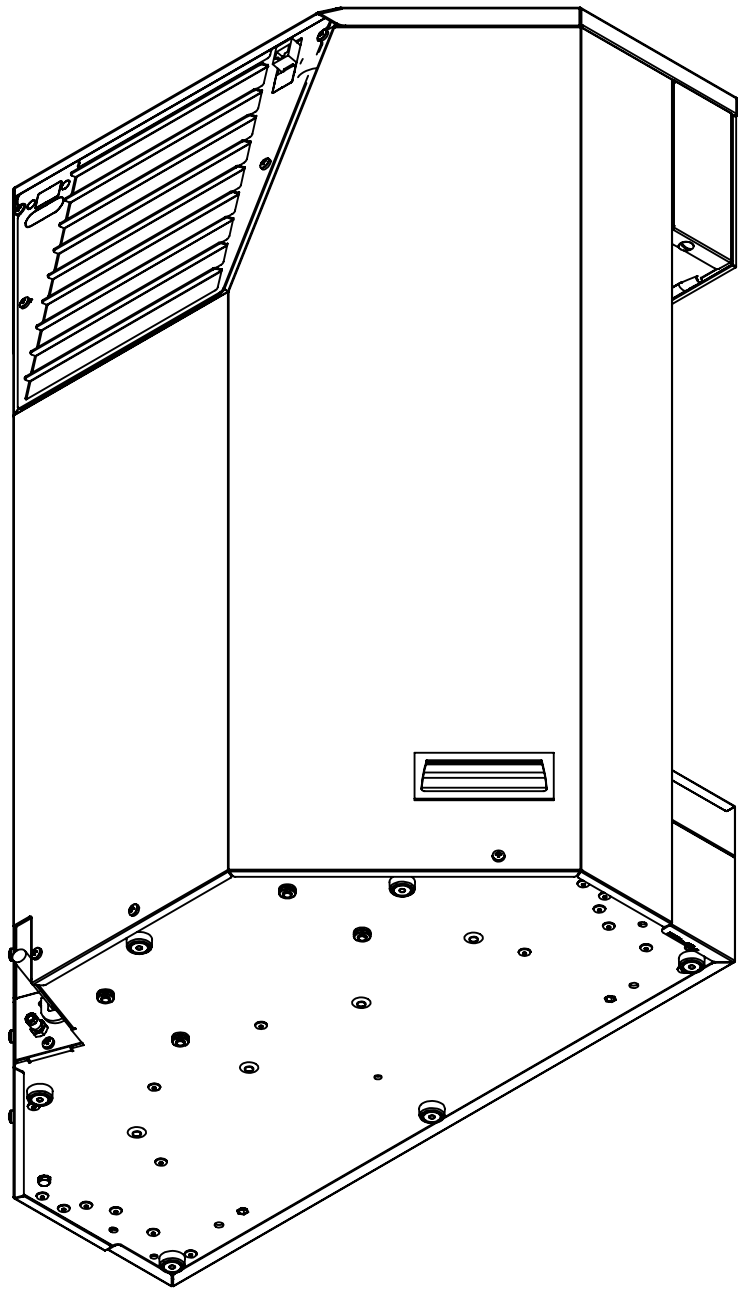
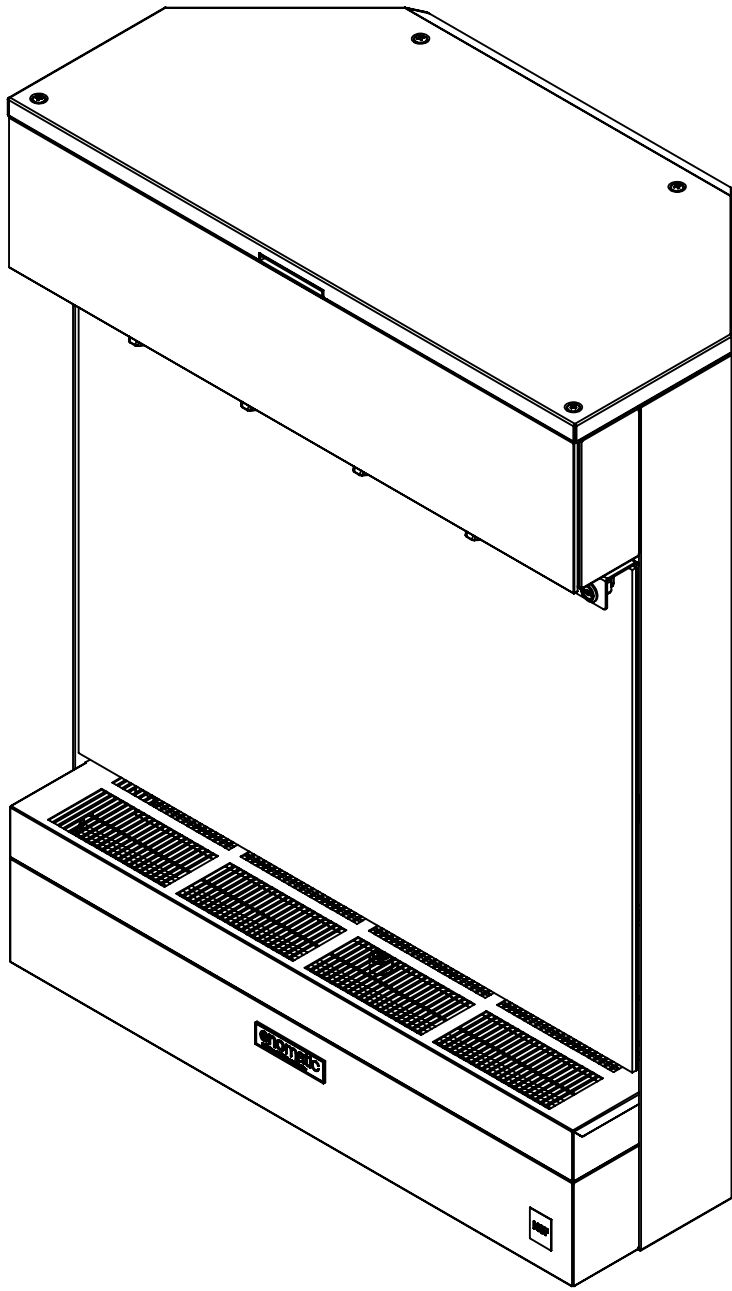
PROPRIETARY AND CONFIDENTIAL
THE INFORMATION CONTAINED IN THIS
DRAWING IS THE SOLE PROPERTY OF
ENOMATIC. ANY REPRODUCTION IN
PART OR AS A WHOLE WITHOUT THE
WRITTEN PERMISSION OF ENOMATIC
IS PROHIBITED.

REV.	DESCRIPTION	DATE	EXECUTOR	CHK'D	APPV'D
CODE:	MATERIAL:				WEIGHT Kg:
/	/				/

DWG NO.	ELC380-YM000	A3
QUOTE SENZA INDICAZIONI DI TOLLERANZA SECONDO UNI EN 22768 - mH DIMENSIONS WITHOUT TOLERANCE FIGURES, ACCORDING TO UNI EN 22768 - mH. STANDARD		
SCALE:1:15	LANGUAGE: ENGLISH	SHEET 6 OF 7
FINISH:	THICKNESS:	

3 - EXAMPLE OF INSTALLATION - BUILT-IN POSITIONING
(REFER TO MINIMAL REQUIRED CLEARANCE FOR PROPER PERFORMANCES)






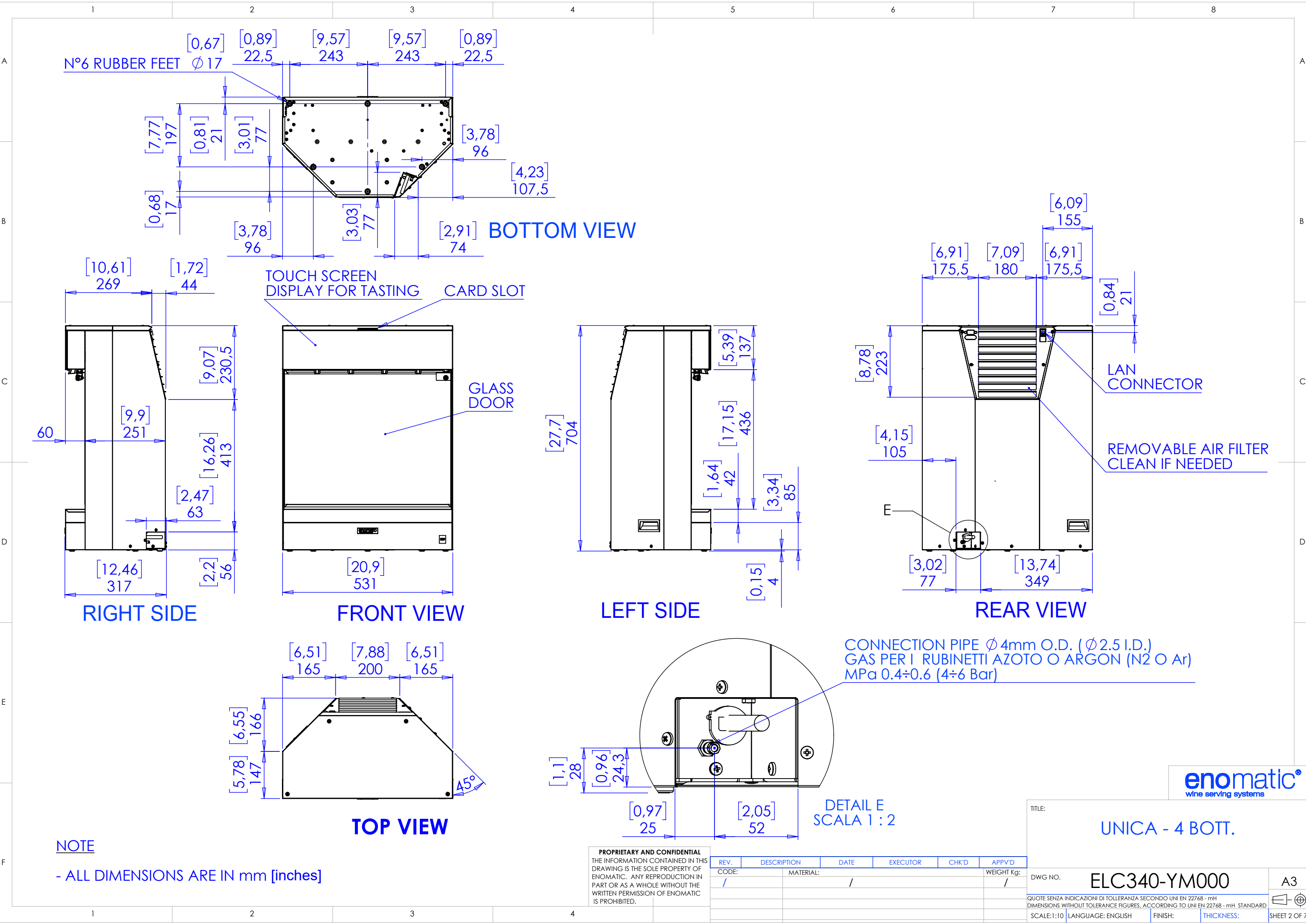
enomatic®
wine serving systems

UNICA - 4 BOTT.

PROPRIETARY AND CONFIDENTIAL
THE INFORMATION CONTAINED IN THIS
DRAWING IS THE SOLE PROPERTY OF
ENOMATIC. ANY REPRODUCTION IN
PART OR AS A WHOLE WITHOUT THE
WRITTEN PERMISSION OF ENOMATIC
IS PROHIBITED.

0	EMISSIONE	21/10/2020	PANICHI		
REV.	DESCRIPTION	DATE	EXECUTOR	CHK'D	APPV'D
CODE:	MATERIAL:				WEIGHT Kg:
/	/				/

DWG NO.		ELC340-YM000		A3
QUOTE SENZA INDICAZIONI DI TOLLERANZA SECONDO UNI EN 22768 - mH DIMENSIONS WITHOUT TOLERANCE FIGURES, ACCORDING TO UNI EN 22768 - mH. STANDARD				
SCALE:1:5	LANGUAGE: ENGLISH	FINISH:	THICKNESS:	 SHEET 1 OF 7



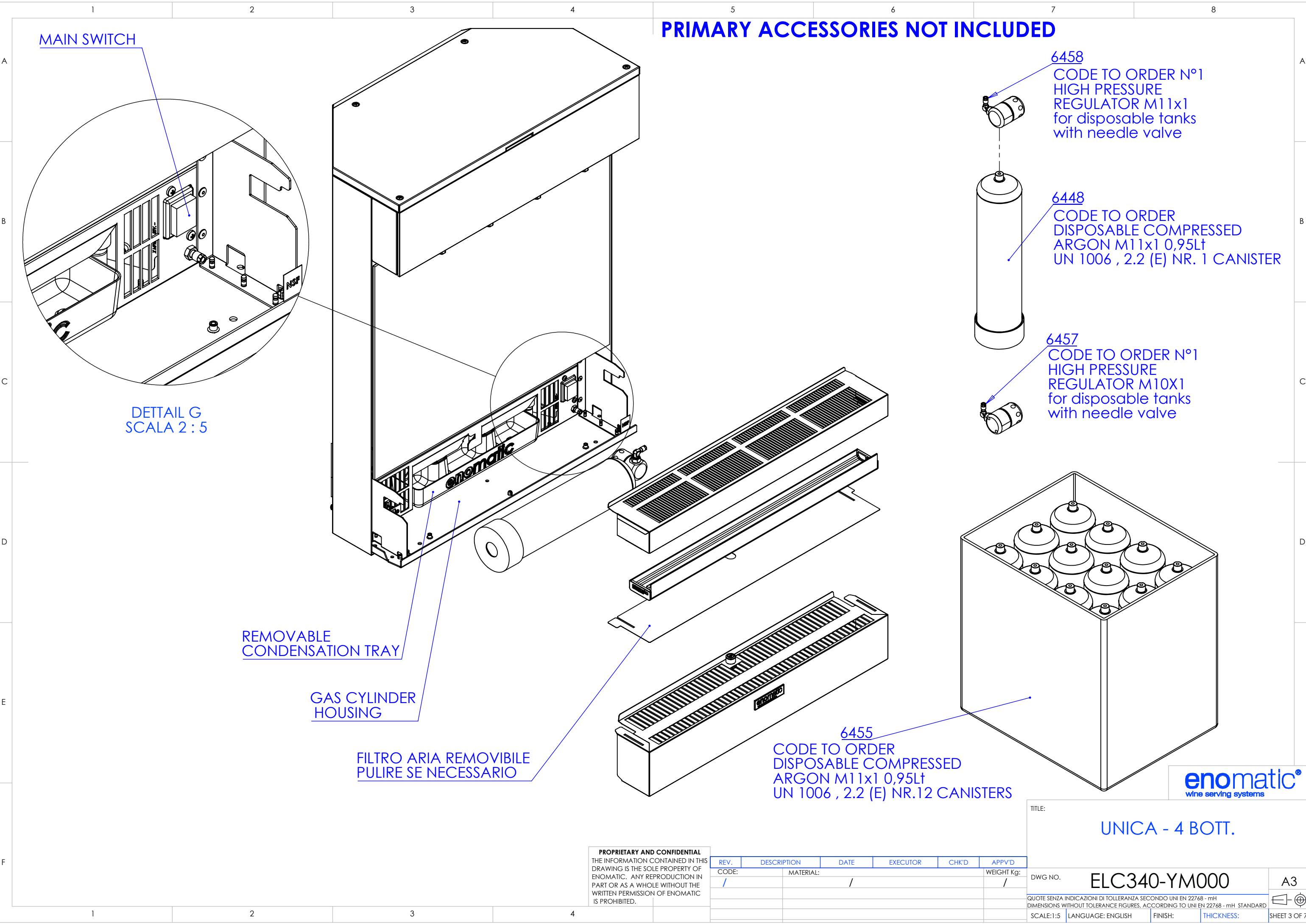
NOTE

- ALL DIMENSIONS ARE IN mm [inches]

PROPRIETARY AND CONFIDENTIAL
THE INFORMATION CONTAINED IN THIS
DRAWING IS THE SOLE PROPERTY OF
ENOMATIC. ANY REPRODUCTION IN
PART OR AS A WHOLE WITHOUT THE
WRITTEN PERMISSION OF ENOMATIC
IS PROHIBITED.

REV.	DESCRIPTION	DATE	EXECUTOR	CHK'D	APPV'D
CODE:	MATERIAL:				WEIGHT Kg:
/	/				/

TITLE:		UNICA - 4 BOTT.	
DWG NO.	ELC340-YM000	A3	
QUOTE SENZA INDICAZIONI DI TOLLERANZA SECONDO UNI EN 22768 - mH DIMENSIONS WITHOUT TOLERANCE FIGURES, ACCORDING TO UNI EN 22768 - mH. STANDARD			
SCALE:1:10	LANGUAGE: ENGLISH	FINISH:	THICKNESS:
		SHEET 2 OF 7	

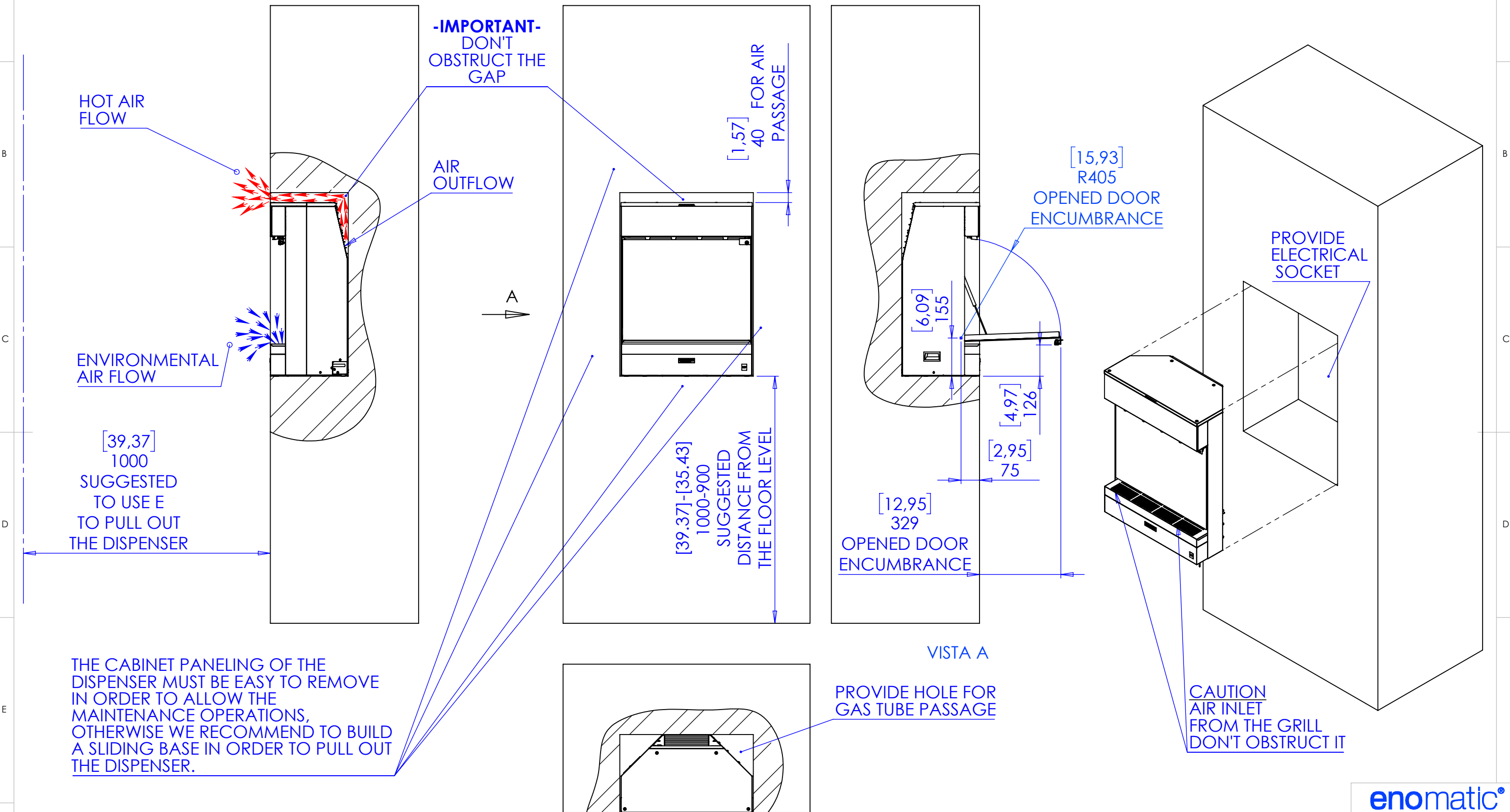


PROPRIETARY AND CONFIDENTIAL
THE INFORMATION CONTAINED IN THIS
DRAWING IS THE SOLE PROPERTY OF
ENOMATIC. ANY REPRODUCTION IN
PART OR AS A WHOLE WITHOUT THE
WRITTEN PERMISSION OF ENOMATIC
IS PROHIBITED.

REV.	DESCRIPTION	DATE	EXECUTOR	CHK'D	APPV'D
CODE:	MATERIAL:				WEIGHT Kg:
/	/				/

TITLE:	
UNICA - 4 BOTT.	
DWG NO.	ELC340-YM000
QUOTE SENZA INDICAZIONI DI TOLLERANZA SECONDO UNI EN 22768 - mH DIMENSIONS WITHOUT TOLERANCE FIGURES, ACCORDING TO UNI EN 22768 - mH. STANDARD	
SCALE:1:5	LANGUAGE: ENGLISH
FINISH:	THICKNESS:
SHEET 3 OF 7	

1 - EXAMPLE OF INSTALLATION - POSITIONING IN FORESEEN BOX
(REFER TO MINIMAL REQUIRED CLEARANCE FOR PROPER PERFORMANCES)



NOTE
- WARNING: DO NOT INSTALL
THE DISPENSER NEAR TO
SOURCES OF HEAT OR HUMIDITY
- ALL DIMENSIONS ARE IN mm [inches]

PROPRIETARY AND CONFIDENTIAL
THE INFORMATION CONTAINED IN THIS
DRAWING IS THE SOLE PROPERTY OF
ENOMATIC. ANY REPRODUCTION IN
PART OR AS A WHOLE WITHOUT THE
WRITTEN PERMISSION OF ENOMATIC
IS PROHIBITED.

REV.	DESCRIPTION	DATE	EXECUTOR	CHK'D	APPV'D
CODE:	MATERIAL:				WEIGHT Kg:
/	/	/			/

enomatic®
wine serving systems

TITLE:

UNICA - 4 BOTT.

DWG NO.

ELC340-YM000

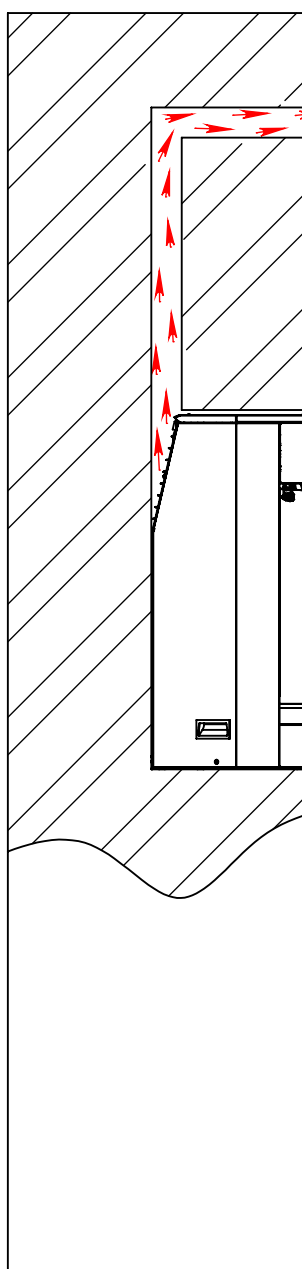
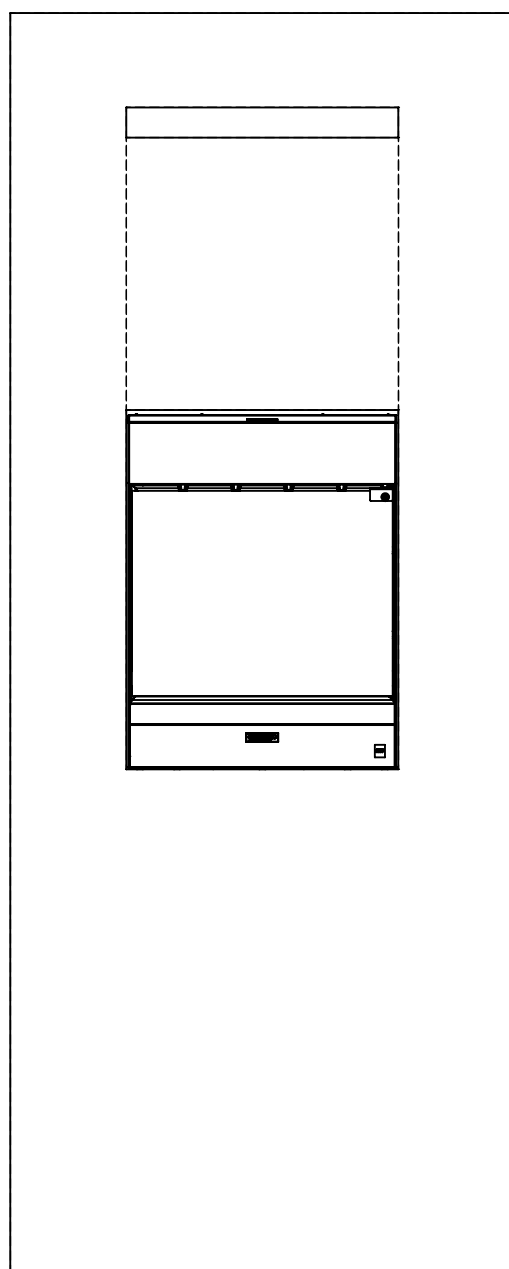
A3

QUOTE SENZA INDICAZIONI DI TOLLERANZA SECONDO UNI EN 22768 - mH
DIMENSIONS WITHOUT TOLERANCE FIGURES, ACCORDING TO UNI EN 22768 - mH. STANDARD

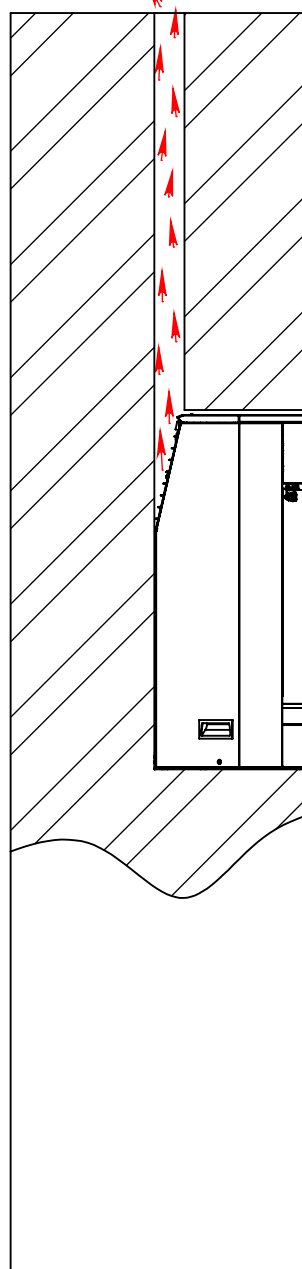
SCALE:1:15 LANGUAGE: ENGLISH FINISH: THICKNESS:

SHEET 5 OF 7

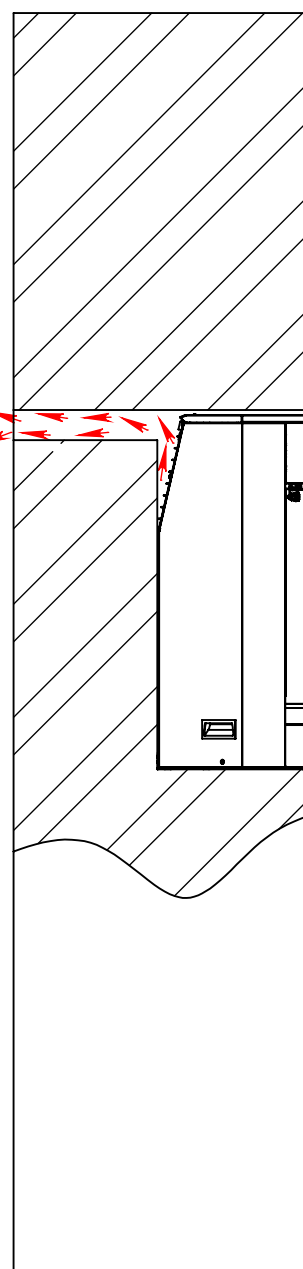
2 -N°4 EXAMPLE OF INSTALLATION - BUILT-IN POSITIONING -
PASSAGE OF AIR FOR EACH DISPENSER BIGGER OF 10000 mm² [15,5 in²]



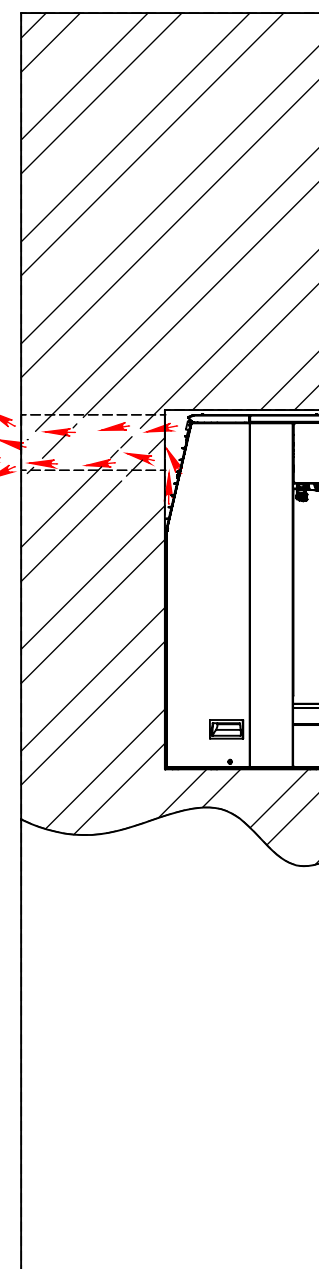
1



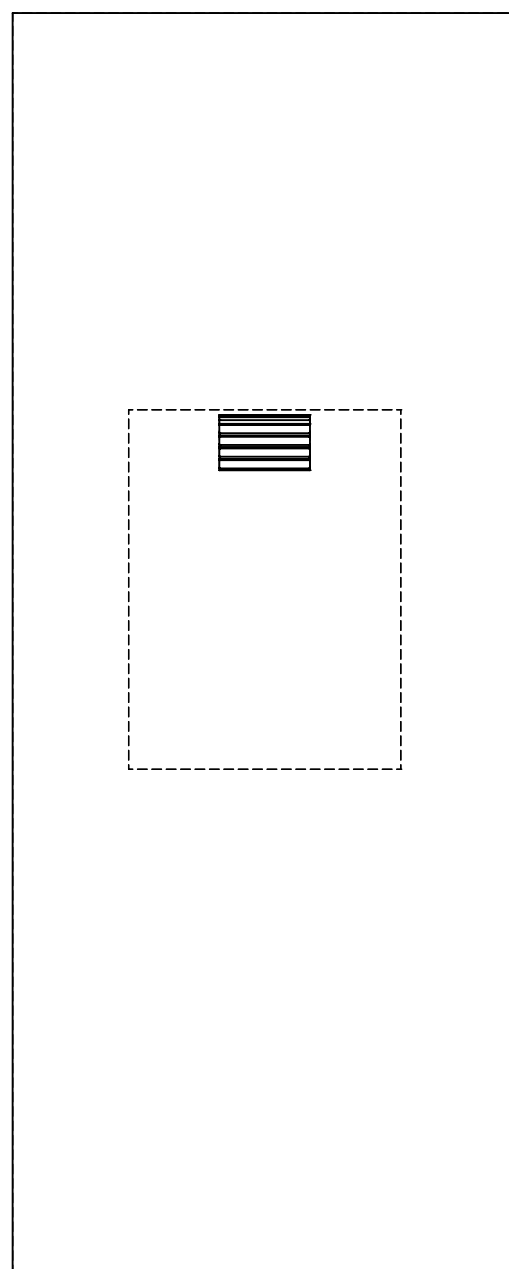
2



3



4

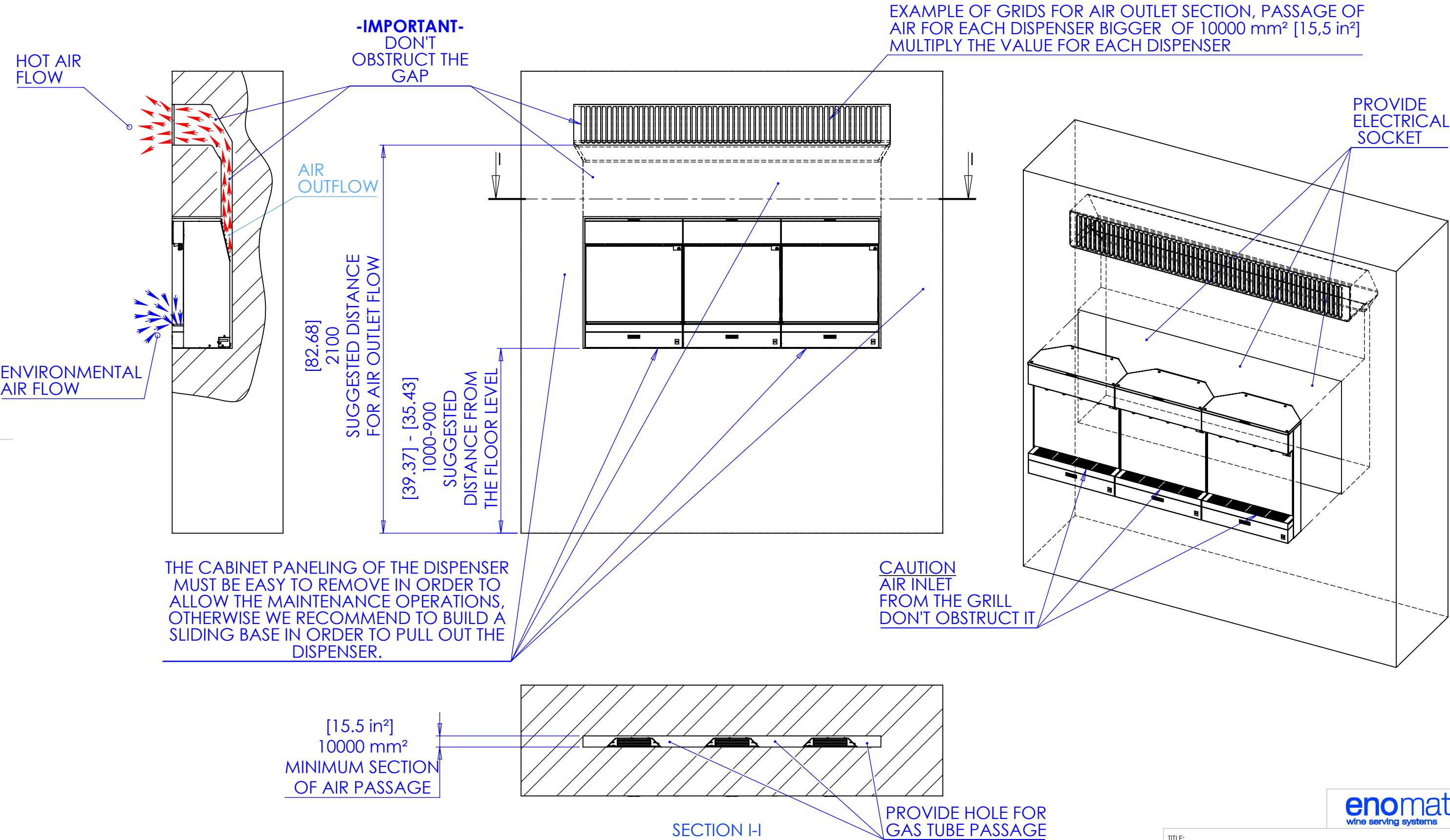


TITLE:	
UNICA - 4 BOTT.	
DWG NO.	ELC340-YM000
QUOTE SENZA INDICAZIONI DI TOLLERANZA SECONDO UNI EN 22768 - mH DIMENSIONS WITHOUT TOLERANCE FIGURES, ACCORDING TO UNI EN 22768 - mH. STANDARD	
SCALE:1:15	LANGUAGE: ENGLISH
FINISH:	THICKNESS:
SHEET 6 OF 7	

PROPRIETARY AND CONFIDENTIAL
THE INFORMATION CONTAINED IN THIS
DRAWING IS THE SOLE PROPERTY OF
ENOMATIC. ANY REPRODUCTION IN
PART OR AS A WHOLE WITHOUT THE
WRITTEN PERMISSION OF ENOMATIC
IS PROHIBITED.

REV.	DESCRIPTION	DATE	EXECUTOR	CHK'D	APPV'D
CODE:	MATERIAL:				WEIGHT Kg:
/	/				/


3 - EXAMPLE OF INSTALLATION - POSITIONING IN FORESEEN BOX
(REFER TO MINIMAL REQUIRED CLEARANCE FOR PROPER PERFORMANCES)



NOTE
- WARNING: DO NOT INSTALL THE DISPENSER NEAR TO SOURCES OF HEAT OR HUMIDITY
- ALL DIMENSIONS ARE IN mm [inches]

PROPRIETARY AND CONFIDENTIAL
THE INFORMATION CONTAINED IN THIS DRAWING IS THE SOLE PROPERTY OF ENOMATIC. ANY REPRODUCTION IN PART OR AS A WHOLE WITHOUT THE WRITTEN PERMISSION OF ENOMATIC IS PROHIBITED.

REV.	DESCRIPTION	DATE	EXECUTOR	CHK'D	APPV'D
CODE:	MATERIAL:				WEIGHT Kg:
/	/	/			/



wine serving systems

TITLE:

UNICA - 4 BOTT.

DWG NO.

ELC340-YM000

A3

QUOTE SENZA INDICAZIONI DI TOLLERANZA SECONDO UNI EN 22768 - mH
DIMENSIONS WITHOUT TOLERANCE FIGURES, ACCORDING TO UNI EN 22768 - mH. STANDARD

SCALE:1:20

LANGUAGE: ENGLISH

FINISH:

THICKNESS:

SHEET 7 OF 7